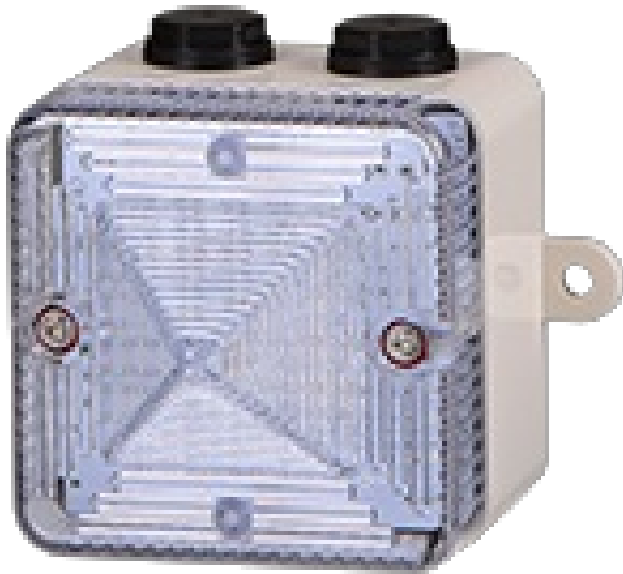


LED BEACONS

L101LDCMG/C

LED beacon | 12 & 24V DC | white | with mounting lugs



Specifications

Brand	E2S	Light source	High Power LED
Cable entry	2x M20 & 1x 1/2"NPT	Luminous intensity	180cd continu; 113cd flash
Certificates, quality marks, markings	CE, UL, UKCA, SIL1 & SIL2 compliant to IEC61508	Material	High impact UL94 V0 & 5VA FR PC
Colour lens	White	Mounting and connection type	External mounting eyes
Connection	0,5-2,5mm ² (20-14 AWG)	Operating temperature	-40°C to +70°C
Dimensions	86mm x 86mm x 93mm	Operating voltage	10-14V DC & 16-33V DC
Housing colour	Grey	Rated current	180mA max.
Impact resistance	3x 5lb (UL1638)	Relative humidity	95% @ 20°C
Ingress protection	IP66 & IP67	Type	Pre-configured
LED life	>60 000h	Voltage	12V DC / 24V DC
Light patterns	Steady, blinking and flash	Weight	200g