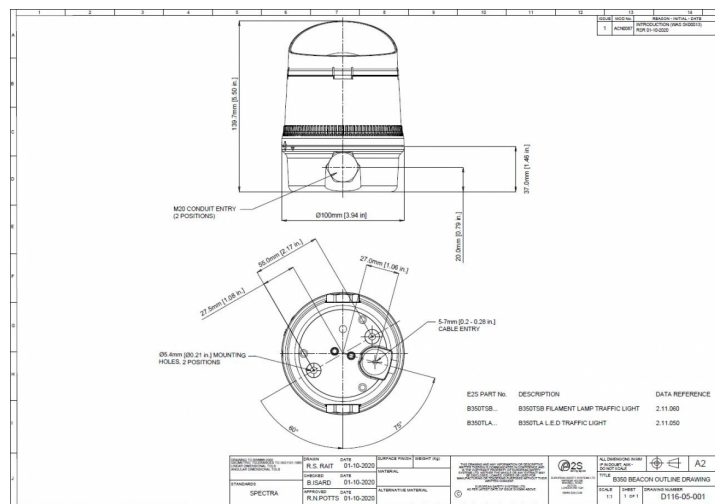


# TRAFFIC LIGHTS

B350TLA230B/R

traffic light LED 90-230V red



## Specifications

Brand	E2S
CE certificate	Yes
Cable entry	1x 5-7mm IP67 push through grommet, 2x 20mm clearance cable entry
Colour lens	Opal
Diameter lens	65mm
Dimensions	Ø140mm x 100mm
Housing colour	Grey
Ingress protection	IP65
LEDs colour	Red
Light patterns	Steady, blinking and flash

Luminous intensity	211cd
Material	Polycarbonate
Operating temperature	-40°C to +70°C
Operating voltage	48-260V AC/DC
Rated current	260V AC 51mA
Rated voltage	230V AC
Weight	243g