

PANEL-MOUNTED SOCKET OUTLETS STRAIGHT

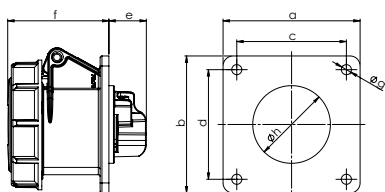
according to IEC 60309, EN 60309, VDE 0623



PANEL-MOUNTED SOCKET OUTLET STRAIGHT

watertight IP67

- screw terminals
- nickel-plated contacts



POLES	3	4	5	3	4	5
AMPERE	16			32		

a and b	75	75	75	75	75	75
c and d	60	60	60	60	60	60
e	21	21	21	23	23	23
f	56	57	59	69	69	71
g	5,5	5,5	5,5	5,5	5,5	5,5
h	43	45	55	55	55	58
Weight [g/each]	135	153	183	206	222	260

VOLTAGE	110 V~	230 V~	230 V~	400 V~	440 V~	500 V~
FREQUENCY	50/60 Hz	50/60 Hz	50/60 Hz	50/60 Hz	50/60 Hz	50/60 Hz
DESIGNATION	4h	3p = 6h 4p/5p = 9h	1h	3p = 9h 4p/5p = 6h	11h	7h

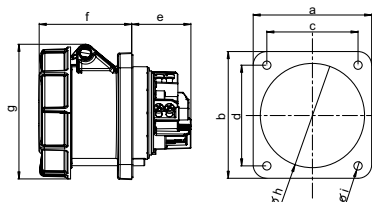
AMPERE	POLES	ITEM NO.	ITEM NO.	ITEM NO.	ITEM NO.	ITEM NO.	ITEM NO.	PACKING UNIT
16	3	F31S150	F31S250	F31S050			F31S550	10
16	4	F41S150	F41S250		F41S350	F41S450	F41S550	10
16	5		F51S250	F51S050	F51S350		F51S550	10
32	3	F32S150	F32S250	F32S050			F32S550	10
32	4	F42S150	F42S250		F42S350	F42S450	F42S550	10
32	5		F52S250	F52S050	F52S350		F52S550	10



PANEL-MOUNTED SOCKET OUTLET STRAIGHT

watertight IP67

- HighPower version
- with pilot contact
- screw terminals
- contacts: brass with lamellar contact CuBe
- splash-proof IP44 upon request



POLES	3	4	5
AMPERE	63		

Flange a	100	100	100
Flange b	100	100	100
Hole spacing c	80	80	80
Hole spacing d	80	80	80
e	50	50	50
f	80	80	80
g	114	114	114
h	85	85	85
i	7	7	7
Weight [g/each]	440	485	539

VOLTAGE	230 V~	230 V~	400 V~	440 V~	500 V~
FREQUENCY	50/60 Hz	50/60 Hz	50/60 Hz	50/60 Hz	50/60 Hz
DESIGNATION	3p = 6h 4p/5p = 9h	1h	3p = 9h 4p/5p = 6h	11h	7h

AMPERE	POLES	ITEM NO.	ITEM NO.	ITEM NO.	ITEM NO.	ITEM NO.	PACKING UNIT
63	3	F33S257				F33S557	2
63	4	F43S257		F43S357	F43S457	F43S557	2
63	5	F53S257	F53S057	F53S357		F53S557	2