



technical data sheet

Description :

PRO SERIES WALL MOUNTED CABINETS **Front glass door, side blind panels**

PRO series wall mounted cabinets are designed for the containment of the main equipment for structured cabling, LAN networks. The new solution, with an original design allows the integration of a wide range of accessories needed in the most advanced hi-tech environments. They are available with a width of 600 mm and a depth of 420, 520 or 620 mm, with front glass door and side blind panels. Easy transport and fast assembly flat-packs are also available.

CODE		DESCRIPTION	OVERALL DIMENSIONS (mm)						WEIGHT	BEAR
			OVERALL			USEFULL				
Assembled	Flat pack		W	D	H	W.us	D.us	H.us	Kg	Kg
2010031	2010031F	Cabinet 19" 600x420x6U	600	420	387	450	376	323	11,6	50
2010032	2010032F	Cabinet 19" 600x420x9U	600	420	520	450	376	456	13,7	50
2010042	2010042F	Cabinet 19" 600x520x9U	600	520	520	450	476	456	15,7	50
2010054	2010054F	Cabinet 19" 600x620x9U	600	620	520	450	576	456	18,5	50
2010034	2010034F	Cabinet 19" 600x420x12U	600	420	655	450	376	591	15,9	50
2010044	2010044F	Cabinet 19" 600x520x12U	600	520	655	450	476	591	18,4	50
2010056	2010056F	Cabinet 19" 600x620x12U	600	620	655	450	576	591	20,2	50
2010045	2010045F	Cabinet 19" 600x520x15U	600	520	787	450	476	723	19,1	50
2010057	2010057F	Cabinet 19" 600x620x15U	600	620	787	450	576	723	22,4	50



GENERAL FEATURES

- Steel sheet structure
- Front safety glass door, reversible by easy remove system with lock and keys, 180° opening
- Blind side panels removable by ¼ turn locks
- Nr. 2 front 19" galvanized uprights adjustable in depth according to IEC 60297-1
- Ventilation slots for hot air outlet on top and bottom, premises to install ventilation kit with 1 or 2 fans on the roof
- Cable inlets from top and bottom
- Color Gray RAL 7035
- IP 20 protection degree according to EN 60529
- Equipped with rear panel
- Static load: 50 Kg
- Packaging of assembled rack: cardboard and transparent film
- Packaging of flat pack: cardboard and polystyrene

QUBIX S.p.A. Networking solutions – Via Canada, 22/A – 35127 Padova – Italy
Tel. +39 049 7801994 – Fax +39 049 775667 – <http://www.qubix.it>

Rev. 01-19

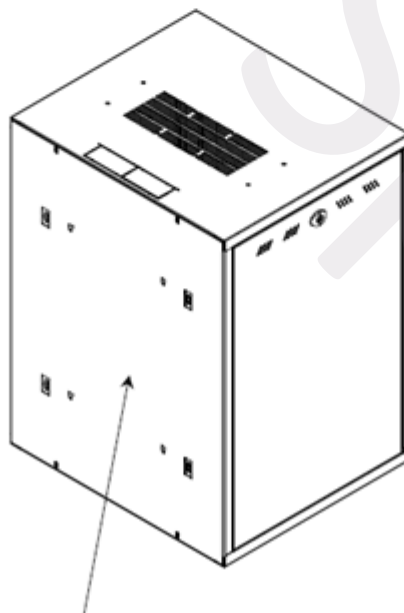
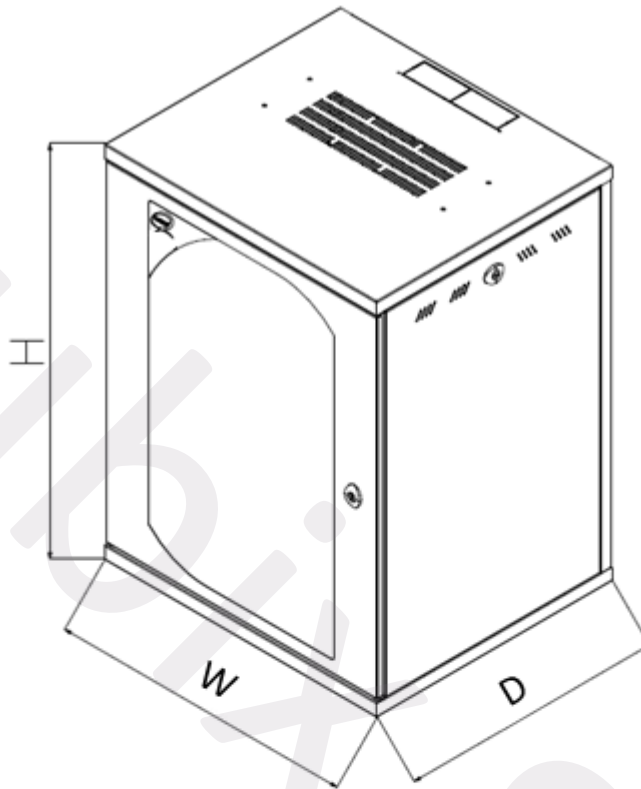
Qubix S.p.A. si riserva di apportare modifiche e migliorie in qualsiasi momento senza preavviso
Qubix S.p.A. reserves the right to make changes and improvements at any time without notice



Description :

PRO SERIES WALL MOUNTED CABINETS
Front glass door, side blind panels

TECHNICAL DRAWINGS



Fast fastening rear panel



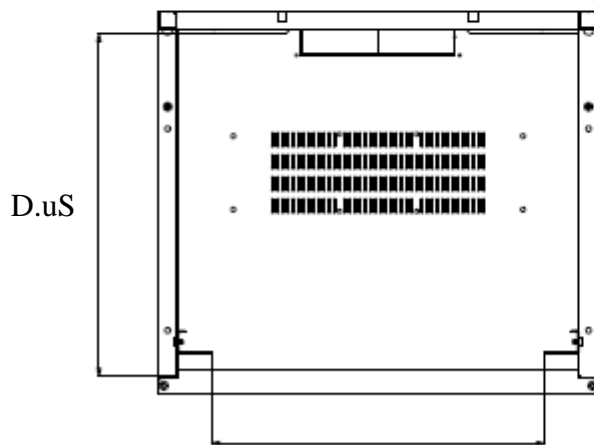
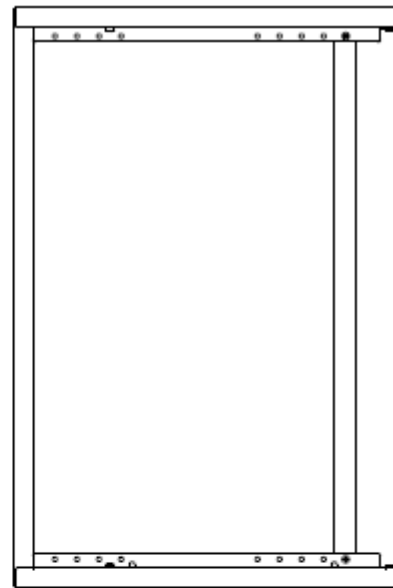
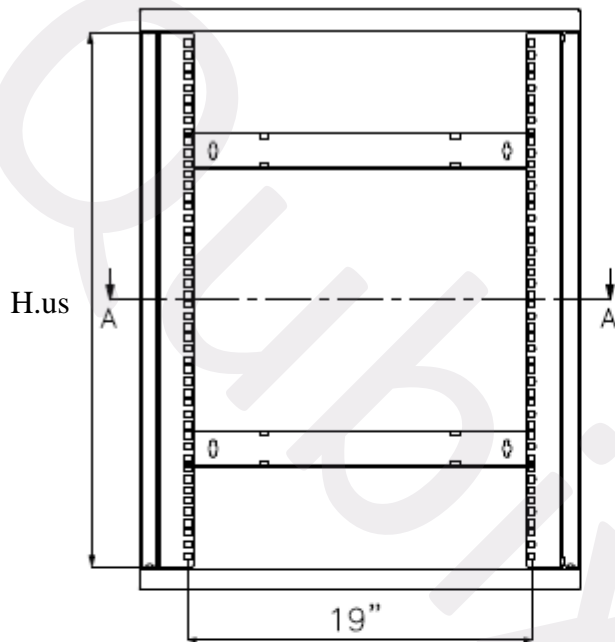
Description :

PRO SERIES WALL MOUNTED CABINETS
Front glass door, side blind panels

TECHNICAL DRAWINGS

Frontal view

Side view



W.us

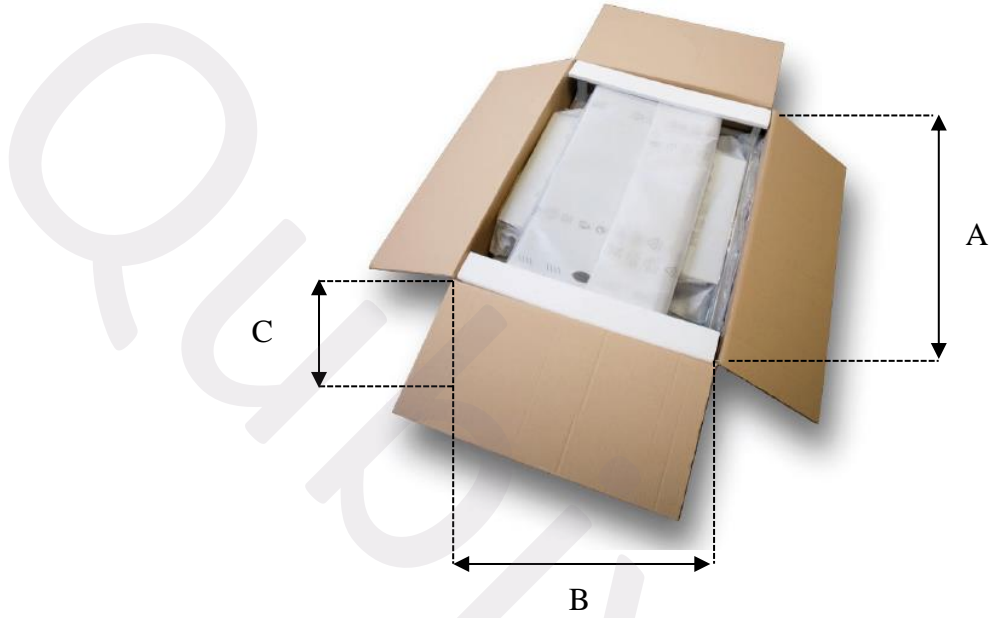
A-A
Section



Description :

PRO SERIES WALL MOUNTED CABINETS
Front glass door, side blind panels

FLAT PACK PACKING DIMENSIONS



CODE	DESCRIPTION	FLAT PACK DIMENSIONS (mm)		
		A	B	C
2010031F	Cabinet 19" 600x420x6U	630	455	250
2010032F	Cabinet 19" 600x420x9U	650	650	220
2010042F	Cabinet 19" 600x520x9U	650	650	220
2010054F	Cabinet 19" 600x620x9U	650	650	220
2010034F	Cabinet 19" 600x420x12U	700	640	220
2010044F	Cabinet 19" 600x520x12U	700	640	220
2010056F	Cabinet 19" 600x620x12U	700	640	220
2010045F	Cabinet 19" 600x520x15U	630	820	270
2010057F	Cabinet 19" 600x620x15U	630	820	270